

**Alumatec Pacific Products™ Model:
AT-9HC (100k cycle) & AT-9SHC (200K cycle)**

PART 1 GENERAL

1.01 SUMMARY

- A. Aluminum Rolling Grille manufactured by Alumatec Pacific Products™ is as shown on this submittal.
B. Design, construction and preparation of openings, access panels; field wiring, wire conduit, fuses, disconnect switches, finish or field painting are excluded (unless powder coat finish is provided).

1.02 SYSTEM DESCRIPTION

- A. Rolling Grille assemblies are designed and fabricated for HIGH cycle usage up to 200K cycle-life (see models above).

1.03 WARRANTY

- A. Limited (see warranty sheet) Two years from date of shipment – warranty does not apply to finishes.

PART 2 PRODUCTS

2.01 MANUFACTURER

- A. Alumatec Pacific Products™: 1155 West 500 North, Centerville, UT 84014 – www.alumatecpp.com
B. Sales Department: 801.298.0181 ext 1 or Toll Free 877.770.0181 ext 1

2.02 MATERIALS

- A. **Curtain** is assembled from horizontal rods to consist of extruded aluminum, 5/16" round 6063, spaced at 2" on center. Vertical link to consist of single .125 thick center link with .0830 double stamped aluminum links. Connected with heavy-duty (zinc plated copper) eyelets, spaced at 9" on center. Hollow aluminum sleeves are placed over every 6th curtain rod to maximize strength of curtain. Secondary back-up commercial grade Axle nut over every C-clip at each end of grille.

- B. **Bottom Bar** is a rectangular shape extruded from 6063-alloy aluminum, attached to the bottom of the curtain. Medium 3 7/8" bottom cap to seal gap in opening / or double aluminum angle 2" x 3" x 3/16" thick slotted for guide travel.

- C. **Barrel** is steel tubing or pipe, 6 5/8" minimum diameter, to support the curtain with a maximum deflection of 0.03 per ft. of width. Cold drawn steel shaft, rotating through a sealed bearing high cycle flange bearing. Attached with grade 5 3/8" HHCS bolts, washers, lock washers and nuts.

- Barrel is designed with NO counter-balance spring for maximum cycle-life.

- D. **Safety Brake**: GAPOSA 21rpm mechanical brake with commercial grade 1 1/2" bearing to stop the decent of the door if sudden acceleration occurs (see safety brake spec sheet).

- E. **Brackets** are steel plates, 1/4" minimum thickness, bolted to support angle, or tube steel.

- Bracket on operator side (drive) is fitted with a sealed high cycle flange bearing. Opposite drive side plate to accept stop-lock bearing engineered per opening for required torque to stop grille in case of free fall for safety.

- F. **Guides** are constructed from 1/2" extruded aluminum U-shape design to allow curtain to extend 2 inches into each jamb. Guides are attached to steel wall angle with 1/4" minimum bolts spaced not more than 24" on center. Removable curtain stops are provided and pre-drilled onto guide at soffit level.

- G. **Hood Cover**: consists of 24 gauge electro-galvanized (paint-loc) sheet metal to wrap and cover coil area. Center hood support included on all openings over 15 foot wide or larger.

- H. **Operation** is as indicated:

- MOTOR** – Micanan Titan Series (Euro-Drive) 1-HP high performance operator (see operator spec sheet).

- I. **Locking** is not recommended or required on high cycle applications. Curtain to lock by motor gears only.

2.03 FINISHES

- A. Aluminum curtain finish as indicated:

- Mill (standard) Clear Anodized Black Anodized Bronze Anodized

- B. Bottom bar, Bottom bar cap/flange plate, and guides finish as indicated:

- Clear Anodized Black Anodized Bronze Anodized

- C. Exposed steel surfaces are painted with a rust-inhibiting gray or black primer on exterior applications.

PART 3 EXECUTIONS

3.01 INSTALLATION

- A. Doors are to be installed in accordance with Alumatec Pacific Products™ installation instructions and by an Authorized Alumatec Pacific Door Dealer only. Annual service to high cycle grilles is highly recommended by manufacture.

- B. ****Vertical links MUST stack upon themselves for proper life cycle to be obtained from this model grille****.

Additional comments:



1155 West 500 North
Centerville, Utah 84014

Tel: 801.298.0181 Fax: 801.298.0905

Toll Free: 877.770.0181 ext 1

see us at
Sweets.com

sales@alumatecpp.com • info@alumatecpp.com • www.alumatecpp.com

**HIGH CYCLE GRILLES
AT-9HC/AT-9SHC**



HIGH CYCLE GRILLES AT-9HC/AT-9SHC



Design Specifications



AT-9HC (100K CYCLE)

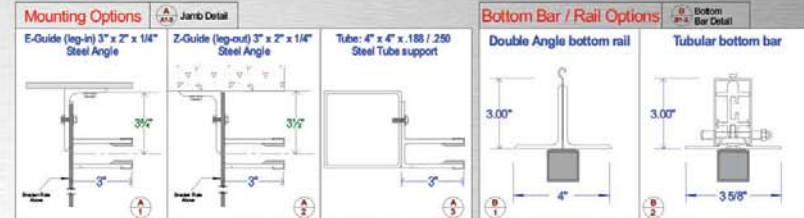
100,000 HIGH CYCLE model parking garage grille package:

- a) zinc plated copper eyelet constructed vertical link assemblies.
- b) horizontal rods sleeved every 6th rod across opening.
- c) 9" on center link spacing with .125 thick center link & .080 thick double link.
- d) Axle nut placed at each rod as secondary back-up protection.
- e) 3" deep High Cycle guide with rigid PVC guide sleeves.
- f) Full width top slat (no starter slats) for grille connection to barrel assembly).
- g) 100k cycle spring assembly (1 1/4" C/D round shafts by 1/4" keyway).
- h) Heavy duty commercial grade 100k cycle rated flange bearings.

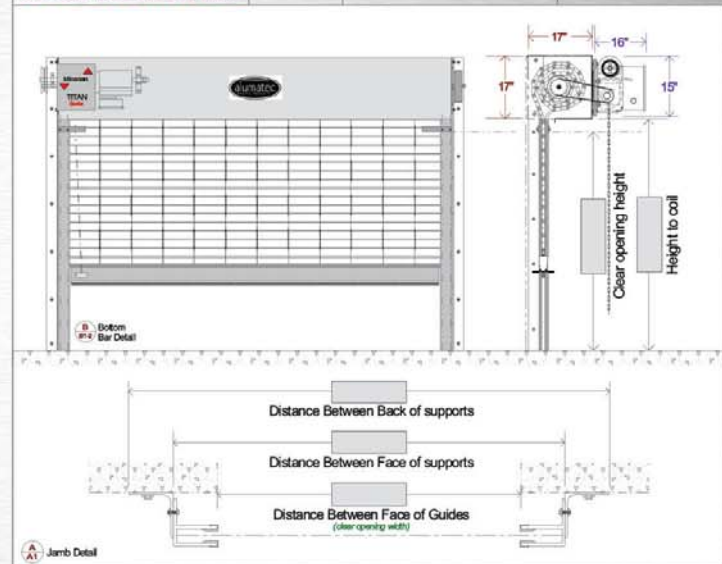
AT-9SHC (200K CYCLE)

200,000 HIGH CYCLE model parking garage grille package:

- a) zinc plated copper eyelet constructed vertical link assemblies.
- b) horizontal rods sleeved every 6th rod across opening.
- c) 9" on center link spacing with .125 thick center link & .080 thick double link.
- d) Axle nut placed at each rod as secondary back-up protection.
- e) 3" deep High Cycle guide with rigid PVC guide sleeves.
- f) Full width top slat (no starter slats) for grille connection at barrel assembly).
- g) Spring-less barrel assembly (no counter balance required).
- h) GAPOSA™ safety brake (1 1/2" C/D round shafts by 3/8" keyway).
- i) Heavy duty commercial grade 200k cycle rated flange bearings.



AT-9HC/SHC GRILLE Details



Finish Options:

Grille Curtain Finish Options:

- Mill finish
- Clear Satin anodized
- Dk. Bronze anodized
- Black anodized

Bottom Bar & Guides Finish Options:

- Mill finish
- Clear Satin anodized
- Dk. Bronze anodized
- Black anodized

- Curtain RAL # _____ powder coated
- Bottom Rail & Guides RAL # _____ powder coated

Motor Operator Options:

- Good:**
(25 cycles per hour) Micanan PRO-GH-7523 (or 43) 1/4 HP 220 volt 3 phase Gear head operator with 55mm gear box, solenoid brake, high cycle application, rated 100k+ cycle life, with timer to close, cycle counter, auxiliary hand chain, FRABA (NEMA 4) photo cells.
- Better:**
(50 cycles per hour) Micanan PRO-GS-10023 (or 43) 1 HP 220 volt 3 phase Gear head operator with 80mm gear box, electric gear brake, high cycle application, rated 200k+ cycle-life, timer to close, cycle counter, auxiliary hand chain, FRABA (NEMA 4) photo cells.
- Best:**
(60+ cycles per hour) Micanan PRO-FDG (Euro-Drive) 1 HP gear head, Highest cycle motor operator (208/230 volt 1-3 phase), with FRABA (NEMA 4) photo cells, and cycle counter (2 million cycle guarantee), auxiliary hand chain, and monitored FRABA photo cells.